

## 研究資料 (Research Material)

# Longicorn beetles of Museum Zoologicum Bogoriense, identified by Dr. E.F. Gilmour, 1963 (Coleoptera: Disteniidae and Cerambycidae)

MAKIHARA Hiroshi <sup>1)\*</sup> and WORO A. NOERDJITO <sup>2)</sup>

### Abstract

In order to support identification of longicorn beetles in Indonesia, we present color pictures of cerambycid specimens identified by Dr. Gilmour. Dr. E.F. Gilmour was a specialist of longicorn beetles. He identified many Indonesian longicorn beetles, and the specimens have been well kept in Museum Zoologicum Bogoriense. We hope that this report is useful for illuminating cerambycid fauna in Indonesia.

**Key words :** Dr. Gilmour, Indonesian cerambycid beetles, Museum Zoologicum Bogoriense

### Introduction

In the present paper, we report 179 Indonesian cerambycid species identified by Dr. Gilmour. The color photos in this report help to identify Indonesian cerambycid beetles. Dr. Elphinstone Forest Gilmour, the director of Doncaster Museum in between 1953 and 1967, was a specialist of Cerambycidae in Africa and South America. Mr. Sampurno Kadarsan, the director of the

Museum Zoologicum Bogoriense (MZB) sent a number of Indonesian cerambycid specimens to Dr. Gilmour for identification. Based on these specimens, Dr. Gilmour with Dr. Stephan v. Breuning described two new genera, six new species, five new subspecies and three new varieties (Gilmour and Breuning, 1963). Dr. Gilmour sent back many specimens with determined species name label to MZB in 1963.

### A list of longicorn beetles of Museum Zoologicum Bogoriense, identified by Dr. E.F. Gilmour, 1963 (Coleoptera: Disteniidae and Cerambycidae)

#### Family Disteniidae

##### 1. *Cyrtanops punctipennis* White (Pl. 1, fig. 1)

Specimen examined: 1♂, C. Java, P. Karimunjawa, 4.xi.1955, Hoogerwerf leg. (MZB, Coleopt. No. 43375).

#### Family Cerambycidae

##### Subfamily Prioninae

##### 2. *Macrotoma (Zooblax) serricollis* Thomson (Pl. 1, fig. 2)

Specimen examined: 1♂, Java, Kali Gamblang, xii.1929, F.C. Drescher leg. (MZB, Coleopt. No. 40477).

##### 3. *Megopis (Baralipon) marginalis* (Fabricius) (Pl. 1, fig. 3)

Specimen examined: 1♂, W. Java, Jakarta, 17.x.1954, W. Soebani leg. (MZB, Coleopt. No. 43824).

##### Subfamily Cerambycinae

##### 4. *Megopis (Baralipon) costata* (Lansberge) (Pl. 1, fig. 4)

Specimen examined: 1♂, Java, Baturaden, G. Slamet, ix.1927, F.C. Drescher leg. (MZB, Coleopt. No. 43288).

##### 5. *Prionomma (Ancyloprotus) javanum* Lansberge (Pl. 1, fig. 5)

Specimen examined: 1♀, Java, Tangkuban, Perahu, xii.1928, F.C. Drescher leg. (MZB, Coleopt. No. 43260).

##### 6. *Dorysthenes (Lophosternus) buqueti* Guérin (Pl. 1, fig. 6)

Specimen examined: 1♂, Java, Baturaden, G. Slamet, xii.1927, F.C. Drescher leg. (MZB, Coleopt. No. 43761).

##### 7. *Dejanira quadripunctata* Thomson (Pl. 2, fig. 7)

Specimen examined: 1♂, Nusokambangan, xii.1930, F.C. Drescher leg. (MZB, Coleopt. No. 41989).

##### 8. *Xystrocera festiva* Thomson (Pl. 2, fig. 8)

Specimen examined: 1♀, Java, Baturaden, viii.1925, F.C. Drescher leg. (MZB, Coleopt. No. 44210).

原稿受付：平成15年10月8日 Received Oct. 8, 2003 原稿受理：平成15年11月19日 Accepted Nov. 19, 2003

\* Department of Global Forest Research, Forestry and Forest Products Research Institute (FFPRI), 1 Matsunosato, Tsukuba, Ibaraki 305-8687, Japan; e-mail: makihara@ffpri.affrc.go.jp

1) Department of Global Forest Research, Forestry and Forest Products Research Institute (FFPRI)

2) Bidang Zoologi Puslit Biologi-LIPI

**9. *Xystrocera globosa* Olivier (Pl. 2, fig. 9)**

Specimen examined: 1♂, Java, Baturaden, viii.1927, F.C. Drescher leg. (MZB, Coleopt. No. 44215).

**10. *Stromatium longicorne* Westwood (Pl. 2, fig. 10)**

Specimen examined: 1♂, C. Java, Karimunjawa, 27.x.1955, Hoogerwerf leg. (MZB, Coleopt. No. 44092).

**11. *Coptocercus biguttatus* Donovan (Pl. 2, fig. 11)**

Specimen examined: 1♂, Maruku, P. Obi, Laiwui, 20.x.1953, collector unknown. (MZB, Coleopt. No. 43417).

**12. *Aeolesthes induta* (Newman) (Pl. 3, figs. 12 & 12')**

Specimens examined: 1♂, Java, Nusakambangan, v.1926, F.C. Drescher leg. (MZB, Coleopt. No. 43269); 1♀, Java, Nusakambangan, x.1926, F.C. Drescher leg. (MZB, Coleopt. No. 43266).

**13. *Zathrephus javanicus* Fisher (Pl. 3, fig. 13)**

Specimen examined: 1♂, Java, G. Slamet, vi.1925, F.C. Drescher leg. (MZB, Coleopt. No. 44190).

**14. *Rhytidodera integra* Kolbe (Pl. 3, fig. 14)**

Specimen examined: 1♀, Java, Wonosobo, 2.xi.1926, F.C. Drescher leg. (MZB, Coleopt. No. 41995).

**15. *Pachylocerus pilosus* Guérin (Pl. 3, fig. 15)**

Specimen examined: 1♀, West Java, Bogor, 27.ix.1924, A.M.R. Wegner leg. (MZB, Coleopt. No. 43929).

**16. *Lachnopterus auripennis* Newman (Pl. 3, fig. 16)**

Specimen examined: 1♀, Maruku, P. Obi, Laiwui, ix-x.1953, A.M.R. Wegner leg. (MZB, Coleopt. No. 43791).

**17. *Thranius sumatrensis* Gahan (Pl. 4, fig. 17)**

Specimen examined: 1♀, S. Sumatra, Lampung, Bengen East, 12.i.1952, A. Sollart leg. (MZB, Coleopt. No. 44113).

**18. *Chloridolum promissum* Pascoe (Pl. 4, fig. 18)**

Specimen examined: 1♂, S. Sulawesi 50 m, Bantimurung, 9-18.viii.1949, A. Djokonoff and Manis leg. (MZB, Coleopt. No. 44219).

**19. *Pachyteria rugosicollis* Ritsema (Pl. 4, fig. 19)**

Specimen examined: 1♀, Java, ?, 1946, Bartels leg. (MZB, Coleopt. No. 41435).

**20. *Coloborhambus drescheri* Fisher (Pl. 4, fig. 20)**

Specimen examined: 1♀, Java, Tangkuban Perahu, ix.1929, F.C. Drescher leg. (MZB, Coleopt. No. 43654).

**21. *Eurybatus decempunctatus* Westwood (Pl. 4, fig. 21)**

Specimen examined: 1♀, Java, Baturaden, G. Slamet, 7-9.viii.1926, F.C. Drescher leg. (MZB, Coleopt. No. 43578).

**22. *Euryclelia cardinalis* Thomson (Pl. 4, fig. 22)**

Specimen examined: 1♀, E. Borneo, 125 m, Tabang, Bengen River, 6.ix.1956, A.M.R. Wegner leg. (MZB, Coleopt. No. 43579).

**23. *Euryphagus lundi* (Fabricius) (Pl. 5, fig. 23)**

Specimen examined: 1♀, S. Sumatra, P. Sebesi,

12.vi.1955, A.M.R. Wegner leg. (MZB, Coleopt. No. 43619).

**24. *Chlorophorus annularis* (Fabricius) (Pl. 5, fig. 24)**

Specimen examined: 1♀, Java, Nanggala, xi.1937, F.C. Drescher leg. (MZB, Coleopt. No. 40531).

**25. *Xylotrechus australis* (Castelnau et Gory) (Pl. 5, fig. 25)**

Specimen examined: 1♀, N.W. New Guinea, Sorong, 24-31.xi.1948, M.A. Lieftinck leg. (MZB, Coleopt. No. 44150).

**26. *Perissus glaucinus* Boisd. (Pl. 5, fig. 26)**

Specimen examined: 1♀, N.W. New Guinea, Sorong, 28.viii-6.ix.1948, M.A. Lieftinck leg. (MZB, Coleopt. No. 43997).

**Subfamily Lamiinae****27. *Anancylus griseatus* Pascoe (Pl. 6, fig. 27)**

Specimen examined: 1♀, W. Java, Cibonar, Ujung Kulon, 19.xi.1958, A.M.R. Wegner leg. (MZB, Coleopt. No. 43205).

**28. *Choelomorpha pigra* (Aurivillius) (Pl. 6, fig. 28)**

Specimen examined: 1♀, Java, Baturaden, G. Slamet, iii.1928, F.C. Drescher leg. (MZB, Coleopt. No. 43118).

**29. *Cacia picticornis* Pascoe (Pl. 6, fig. 29)**

Specimen examined: 1♂, S. Sumatra, Lampung, Bengen East, 13.i.1952, A. Sollaart leg. (MZB, Coleopt. No. 43327).

**30. *Cacia (Ipocregyes) bituberosa* Breuning (Pl. 6, fig. 30)**

Specimen examined: 1♀, Java, Tangkuban Perahu, x.1928, F.C. Drescher leg. (MZB, Coleopt. No. 43716).

**31. *Cacia (Cacia) curta* Breuning (Pl. 6, fig. 31)**

Specimen examined: 1♂, Java, Nusakambangan, iv.1930, F.C. Drescher leg. (MZB, Coleopt. No. 43727).

**32. *Cacia (Cacia) inculta* Pascoe (Pl. 6, fig. 32)**

Specimen examined: 1♂, E. Borneo, 125 m, Tabang, Bengen River, 26.x.1956, A.M.R. Wegner leg. (MZB, Coleopt. No. 43728).

**33. *Cacia (Ipocregyes) setulosa* Pascoe (Pl. 7, fig. 33)**

Specimen examined: 1♂, Java, Baturaden, G. Slamet, vii.1927, F.C. Drescher leg. (MZB, Coleopt. No. 43732).

**34. *Agelasta (Epagelasta) bolteata* Pascoe (Pl. 7, fig. 34)**

Specimen examined: 1♂, Java, Nusakambangan, vii.1937, F.C. Drescher leg. (MZB, Coleopt. No. 43273).

**35. *Coptops illiata* Pascoe (Pl. 7, fig. 35)**

Specimen examined: 1♂, Maruku, P. Obi, Anggai, 3.x.1953, collector unknown. (MZB, Coleopt. No. 42612).

**36. *Coptops lichenea* Pascoe (Pl. 7, fig. 36)**

Specimen examined: 1♂, Nusakambangan, ii.1930, F.C. Drescher leg. (MZB, Coleopt. No. 42603).

**37. *Coptops undulata* Pascoe (Pl. 7, fig. 37)**

Specimen examined: 1♂, Java, Suid Preanger, Patimoean, iii.1926, F.C. Drescher leg. (MZB, Coleopt. No. 42618).

- 38. *Mutatocoptops albopictus* Pic (Pl. 7, fig. 38)**  
Specimen examined: 1♂, Java, Tangkuban Perahu, x.1929, F.C. Drescher leg. (MZB, Coleopt. No. 43882).
- 39. *Paracoptops rufoantennata* Gilmour et Breuning (Pl. 8, fig. 39)**  
Specimen examined: 1♂, Holotype, P. Ambon, Waai, 27.vii.1959, A.M.R. Wegner leg. (MZB, Coleopt. No. 2634).  
This species red-tagged a specimen for the holotype, is a question of being in manuscript.
- 40. *Mulciber linnei* Thomson (Pl. 8, fig. 40)**  
Specimen examined: 1♀, P. Ambon, Waai, 1.viii.1959, A.M.R. Wegner leg. (MZB, Coleopt. No. 43875).
- 41. *Metamulciber buruensis* Gilmour et Breuning (Pl. 8, fig. 41)**  
Specimen examined: 1♂, Holotype, P. Buru, Balu-Balu, 4.vi.1959, A.M.R. Wegner leg. (MZB, Coleopt. No. 2633).  
This species red-tagged a specimen for the holotype, is a question of being in manuscript.
- 42. *Trachelophora cervicollis* Pascoe (Pl. 8, fig. 42)**  
Specimen examined: 1♂, Java, Paturaden, G. Slamet, ix.1929, F.C. Drescher leg. (MZB, Coleopt. No. 44115).
- 43. *Trachelophora maculosa* Aurivillius (Pl. 8, fig. 43)**  
Specimen examined: 1♂, E. Borneo 125 m, Tabang, Bengen River, 28.x.1956, A.M.R. Wegner leg. (MZB, Coleopt. No. 44116).
- 44. *Apomecyna cretacea* Hope (Pl. 8, fig. 44)**  
Specimen examined: 1♀, Java, Baturaden, G. Slamet, xii.1925, F.C. Drescher leg. (MZB, Coleopt. No. 43219).
- 45. *Apomecyna longicollis* Pic (Pl. 9, fig. 45)**  
Specimen examined: 1♂, Java, Baturaden, G. Slamet, i.1926, F.C. Drescher leg. (MZB, Coleopt. No. 43226).
- 46. *Apomecyna saltator tonkinea* Pic (Pl. 9, fig. 46)**  
Specimen examined: 1♀, Java, Zuid Banyumas, Kubangkangkung, ii.1922, collector unknown. (MZB, Coleopt. No. 43228).
- 47. *Apomecyna tigrina* Thomson (Pl. 9, fig. 47)**  
Specimen examined: 1♀, Java, Baturaden, G. Slamet, ii.1926, F.C. Drescher leg. (MZB, Coleopt. No. 43224).
- 48. *Atimura bacillima* Pascoe (Pl. 9, fig. 48)**  
Specimen examined: 1♂, E. Borneo, 95 m, Gunung Sari, 16.viii.1956, A.M.R. Wegner leg. (MZB, Coleopt. No. 43286).
- 49. *Sybra alternans* Wiedemann (Pl. 9, fig. 49)**  
Specimen examined: 1♀, Java, Baturaden, G. Slamet, v.1928, F.C. Drescher leg. (MZB, Coleopt. No. 42931).
- 50. *Sybra binotata* Gahan (Pl. 9, fig. 50)**  
Specimen examined: 1♂, Java, Zuid Banyumas, Kubangkangkung, 25 m, i.1923, F.C. Drescher leg. (MZB, Coleopt. No. 42935).
- 51. *Sybra incana* Pascoe (Pl. 10, fig. 51)**  
Specimen examined: 1♀, E. Borneo, 95 m, Gunung Sari, 17.viii.1956, A.M.R. Wegner leg. (MZB, Coleopt. No. 42939).
- 52. *Sybra lineatipennis* Breuning (Pl. 10, fig. 52)**  
Specimen examined: 1♂, Maruku, P. Obi, ix-x.1953, A.M.R. Wegner leg. (MZB, Coleopt. No. 42940).
- 53. *Sybra quadripunctata* Breuning (Pl. 10, fig. 53)**  
Specimen examined: 1♂, Java, Tangkuban Perahu, iii.1937, F.C. Drescher leg. (MZB, Coleopt. No. 42941).
- 54. *Sybra rouyeri* Pic (Pl. 10, fig. 54)**  
Specimen examined: 1♂, Java, Baturaden, G. Slamet, viii.1926, F.C. Drescher leg. (MZB, Coleopt. No. 42942).
- 55. *Sybra trapezoidalis* Breuning (Pl. 10, fig. 55)**  
Specimen examined: 1♀, Java, Baturaden, G. Slamet, iii.1936, F.C. Drescher leg. (MZB, Coleopt. No. 42946).
- 56. *Ropica honesta* Pascoe (Pl.10, fig. 56)**  
Specimen examined: 1♀, Java, Zuid Banyumas, Kubangkangkung, xii.1922, F.C. Drescher leg. (MZB, Coleopt. No. 44048).
- 57. *Ropica javanica* Breuning (Pl. 11, fig. 57)**  
Specimen examined: 1♂, Java, Baturaden, G. Slamet, v.1928, F.C. Drescher leg. (MZB, Coleopt. No. 44049).
- 58. *Ropica servilis* Pascoe (Pl. 11, fig. 58)**  
Specimen examined: 1♂, Maruku, N.W. Obi, Waieui, ix-x.1953, A.M.R. Wegner leg. (MZB, Coleopt. No. 44052).
- 59. *Ropica strandi* Breuning (Pl. 11, fig. 59)**  
Specimen examined: 1♂, Java, Baturaden, G. Slamet, iv.1928, F.C. Drescher leg. (MZB, Coleopt. No. 44055).
- 60. *Ropica transversemaculata* Breuning (Pl. 11, fig. 60)**  
Specimen examined: 1♀, Java, Tangkuban Perahu, ii.1928, F.C. Drescher leg. (MZB, Coleopt. No. 44058).
- 61. *Athyliia venosa* Pascoe (Pl. 11, fig. 61)**  
Specimen examined: 1♂, Java, Baturaden, G. Slamet, vii.1927, F.C. Drescher leg. (MZB, Coleopt. No. 43282).
- 62. *Cleptometopus montanus* Pascoe (Pl. 12, fig. 62)**  
Specimen examined: 1♀, Java, Tangkuban Perahu, xi.1928, F.C. Drescher leg. (MZB, Coleopt. No. 43355).
- 63. *Cleptometopus javanicus* Breuning (Pl. 12, fig. 63)**  
Specimen examined: 1♂, Java, Baturaden, G. Slamet, v.1927, F.C. Drescher leg. (MZB, Coleopt. No. 53357).
- 64. *Cleptometopus striatopunctatus* Breuning (Pl. 12, fig. 64)**  
Specimen examined: 1♀, Java, G. Guntur, vi.1926, F.C. Drescher leg. (MZB, Coleopt. No. 43359).
- 65. *Anandra griceipennis* Gilmour et Breuning (Pl. 12, fig. 65)**  
Specimen examined: 1♂, Paratype, Gozopa, Flores, 31.iii.1958, A.M.R. Wegner leg. (MZB, Coleopt. No. 2594).
- 66. *Pothyne capito* Pascoe (Pl. 13, fig. 66)**  
Specimen examined: 1♀, P. Buru, Wamlana, 3.vi.1959, A.M.R. Wegner leg. (MZB, Coleopt. No. 42498).
- 67. *Pothyne vittata* Aurivillius (Pl. 13, fig. 67)**  
Specimen examined: 1♂, Java, Nusakambangan,

- ii.1928, F.C. Drescher leg. (MZB, Coleopt. No. 42503).
- 68. *Tetraglenes hirticornis* (Fabricius) (Pl. 13, fig. 68)**  
Specimen examined: 1♀, Java, Baturaden, G. Slamet, vii.1925, F.C. Drescher leg. (MZB, Coleopt. No. 44111).
- 69. *Pterolophia melanura* (Pascoe) (Pl. 13, fig. 69)**  
Specimen examined: 1♀, E. Borneo, Gunung Sari, 16.viii.1956, A.M.R. Wegner leg. (MZB, Coleopt. No. 42735).
- 70. *Pterolophia flavoapicalis* Gilmour et Breuning (Pl. 13, figs. 70)**  
Specimens examined: 1♂, Holotype, Java, Tangkuban Perahu, ix.1929, F.C. Drescher leg. (MZB, Coleopt. No. 2667).  
This species red-tagged a specimen for the holotype, is a question of being in manuscript.
- 71. *Cenodocus antennatus* Thomson (Pl. 14, fig. 71)**  
Specimen examined: 1♂, Java, Tangkuban Perahu, xii.1929, F.C. Drescher leg. (MZB, Coleopt. No. 43657).
- 72. *Niphona plagifera* Aurivillius (Pl. 14, fig. 72)**  
Specimen examined: 1♀, Java, Tangkuban Perahu, vii.1927, F.C. Drescher leg. (MZB, Coleopt. No. 43901).
- 73. *Niphonoclea illicebrosa* Pascoe (Pl.14, fig. 73)**  
Specimen examined: 1♀, S. Sulawesi, Rantepao, Manggala 900 m, viii.1937, F.C. Drescher leg. (MZB, Coleopt. No. 43903).
- 74. *Daxata (Taxada) confusa* Pascoe (Pl. 14, fig. 74)**  
Specimen examined: 1♂, Java, Tangkuban Perahu, x.1929, F.C. Drescher leg. (MZB, Coleopt. No. 44196).
- 75. *Dystasia variegata* Fisher (Pl. 14, fig. 75)**  
Specimen examined: 1♂, Java, Tangkuban Perahu, ii.1922, F.C. Drescher leg. (MZB, Coleopt. No. 42676).
- 76. *Grammoechus bipartius* Rits. m. *vittatus* (Fisher) (Pl. 14, fig. 76)**  
Specimen examined: 1♂, W. Java, Cibunar, Ujung Kulon, 19.iv.1958, A.M.R. Wegner leg. (MZB, Coleopt. No. 43688).
- 77. *Grammoechus javanicus* Breuning (Pl. 15, fig. 77)**  
Specimen examined: 1♂, Java, Nusakambangan, iv.1926, F.C. Drescher leg. (MZB, Coleopt. No. 43698).
- 78. *Grammoechus polygrammus* Thomson (Pl. 15, fig. 78)**  
Specimen examined: 1♀, Java, 1941, Bartels leg. (MZB, Coleopt. No. 43692).
- 79. *Grammoechus strenuus* Thomson (Pl. 15, fig. 79)**  
Specimen examined: 1♀, Nusakambangan, i.1926, F.C. Drescher leg. (MZB, Coleopt. No. 43695).
- 80. *Millothris irrorata* (Fabricius) (Pl. 15, fig. 80)**  
Specimen examined: 1♀, Java, Baturaden, G. Slamet, iii.1939, F.C. Drescher leg. (MZB, Coleopt. No. 43845).
- 81. *Stesilea prolata* Pascoe (Pl. 15, fig. 81)**  
Specimen examined: 1♀, P. Buru, Balu-balau, 25.vi.1959, A.M.R. Wegner leg. (MZB, Coleopt. No. 44091).
- 82. *Sthenias franciscanus* Thomson (Pl. 15, fig. 82)**  
Specimen examined: 1♀, Exp. Patria, 1939, J.H.J. Wolff leg. (MZB, Coleopt. No. 44088).
- 83. *Tmesisternus glaucus* Pascoe (Pl. 16, fig. 83)**  
Specimen examined: 1♀, P. Ambon, Waai,30.vii.1959, A.M.R. Wegner leg. (MZB, Coleopt. No. 41034).
- 84. *Tmesisternus lotor* Pascoe (Pl. 16, fig. 84)**  
Specimen examined: 1♀, P. Bacan, Wajaua, ii-vii.1953, collector unknown. (MZB, Coleopt. No. 41112).
- 85. *Tmesisternus (Arrhenotus) wallacei* Pascoe (Pl. 16, fig. 85)**  
Specimen examined: 1♂, S. Sulawesi, 50 m, Bantimurung, 9-18.viii.1949, Diakonof & Manis leg. (MZB, Coleopt. No. 41193).
- 86. *Trachystola scabripennis* Pascoe (Pl. 16, fig. 86)**  
Specimen examined: 1♂, Java, G. Guntur, iii.1926, F.C. Drescher leg. (MZB, Coleopt. No. 44136).
- 87. *Epicedia maculatrix* Perty (Pl. 16, fig. 87)**  
Specimen examined: 1♀, Java, Tangkuban Perahu, iv.1930, F.C. Drescher leg. (MZB, Coleopt. No. 41903).
- 88. *Epicedia trimaculata* Chevrolat (Pl. 16, fig. 88)**  
Specimen examined: 1♀, Java, Nusakambangan, iv.1930, F.C. Drescher leg. (MZB, Coleopt. No. 41904).
- 89. *Epepeotes luscus* Fabricius var. *subuniformis* Gilmour et Breuning (Pl. 17, fig. 89)**  
Specimen examined: 1♀, Holotype. S. Sumatra, P. Sebuku, 15.vii.1955, A.M.R. Wegner leg. (MZB, Coleopt. No. 2605).
- 90. *Myagrus spinosus* Pascoe (Pl. 17, fig. 90)**  
Specimen examined: 1♂, Nusakambangan, ii.1930, F.C. Drescher leg. (MZB, Coleopt. No. 43886).
- 91. *Euthyastus binotatus* Pascoe (Pl. 17, figs. 91 & 91')**  
Specimens examined: 1♂, E. Borneo, 95 m, Gunung Sari, 17.viii.1956, A.M.R. Wegner leg. (MZB, Coleopt. No. 44198); 1♀, E. Borneo, 125 m, Tabang, Bengen River, 21.x.1956, A.M.R. Wegner leg. (MZB, Coleopt. No. 43586).
- 92. *Pharsalia mortalis* Thomson (Pl. 17, fig. 92)**  
Specimen examined: 1♂, T. Perahu, iv.1929, F.C. Drescher leg. (MZB, Coleopt. No. 42342).
- 93. *Pharsalia saperdoides* Pascoe (Pl. 18, fig. 93)**  
Specimen examined: 1♀, Java, Bandjawangi, ii.1936, F.C. Drescher leg. (MZB, Coleopt. No. 42349).
- 94. *Nephelotus conspersus* Thomson (Pl. 18, fig. 94)**  
Specimen examined: 1♂, E. Borneo, 125 m, Tabang, Bengen River, 19.ix.1956. A.M.R. Wegner leg. (MZB, Coleopt. No. 43898).
- 95. *Anhammus daleni* Guérin (Pl. 18, fig. 95)**  
Specimen examined: 1♂, Java, Tangkuban Perahu, 1929, F.C. Drescher leg. (MZB, Coleopt. No. 40927).
- 96. *Anoplophora medembachi* Rits. (Pl. 18, fig. 96)**  
Specimen examined: 1♀, Java, Tangkuban Perahu, Preanger, 1200-1500 m, 10.x.1938, collector

- unknown. (MZB, Coleopt. No. 43277).
- 97. *Acalolepta cariosa* (Pascoe) (Pl. 18, fig. 97)**  
Specimen examined: 1♂, P. Bacan, Wajaua, 29.vi.1953, collector unknown. (MZB, Coleopt. No. 43129).
- 98. *Acalolepta ternatensis* Breuning (Pl. 19, fig. 98)**  
Specimen examined: 1♀, Java, 2.xi.1951, collector unknown. (MZB, Coleopt. No. 43142).
- 99. *Acalolepta rusticatrix* (Fabricius) (Pl. 19, fig. 99)**  
Specimen examined: 1♂, W. Java, Bogor, 29.xi.1954, J.H. de Gunst leg. (MZB, Coleopt. No. 43138).
- 100. *Cereopsius luhuanus aequifasciatus* Breuning et de Jong (Pl. 19, fig. 100)**  
Specimen examined: 1♀, Java, Manggala, iv.1938, F.C. Drescher leg. (MZB, Coleopt. No. 43330).
- 101. *Cereopsius javanus* Breuning (Pl. 19, fig. 101)**  
Specimen examined: 1♀, Zuidkust Java, Babakan, 10 m, data unknown, K. Benner leg. (MZB, Coleopt. No. 43399).
- 102. *Cereopsius kulzeri* Breuning (Pl. 20, fig. 102)**  
Specimen examined: 1♂, E. Borneo, 125 m, Tabang, 6.ix.1956, Bengen River, A.M.R. Wegner leg. (MZB, Coleopt. No. 43401).
- 103. *Cereopsius sexmaculatus* Aurivillius (Pl. 20, fig. 103)**  
Specimen examined: 1♂, E. Borneo, 125 m, Tabang, 6.ix.1956, Bengen River, A.M.R. Wegner leg. (MZB, Coleopt. No. 43409).
- 104. *Pelargoderus bipunctatus* Gahan (Pl. 20, fig. 104)**  
Specimen examined: 1♂, Nusakambangan, i.1926, F.C. Drescher leg. (MZB, Coleopt. No. 41370).
- 105. *Batocera tigris* var. *hector* Thomson (Pl. 21, fig. 105)**  
Specimen examined: 1♂, W. Java, Sindangsari, Bogor, 1.iii.1951, Amsari leg. (MZB, Coleopt. No. 39837).
- 106. *Batocera thomsoni bipunctata* Breuning (Pl. 21, fig. 106)**  
Specimen examined: 1♀, P. Bawean, 15.vi.1954, A. Hogerweg leg. (MZB, Coleopt. No. 39921).
- 107. *Batocera victoriana* Thomson (Pl. 21, fig. 107)**  
Specimen examined: 1♀, Borneo, S. Montu, 20 m, Sangkulirang, 28.vii.1957, Kosterman leg. (MZB, Coleopt. No. 39961).
- 108. *Palimna annulata* Olivier (Pl. 21, fig. 108)**  
Specimen examined: 1♀, W. Java, Tamandjaja, 11.xii.1958, A.M.R. Wegner leg. (MZB, Coleopt. No. 42372).
- 109. *Moechotypa javanica* Schwarzer (Pl. 21, fig. 109)**  
Specimen examined: 1♀, Java, Nusakambangan, vii.1927, F.C. Drescher leg. (MZB, Coleopt. No. 43873).
- 110. *Gnoma affinis* Guérin (Pl. 22, figs. 110 & 110')**  
Specimens examined: 1♂, N.W. New Guinea, Sorong, 8-14.viii.1948, M.A. Lieftinck leg. (MZB, Coleopt. No. 40021); 1♀, N.W. New Guinea, Sorong, 24-31.x.1948, M.A. Lieftinck leg. (MZB, Coleopt. No. 40025).
- 111. *Gnoma agroides* Thomson (Pl. 22, figs. 111 & 111')**  
Specimens examined: 1♂, P. Bacan, Wajaua, 2.viii.1953, collector unknown. (MZB, Coleopt. No. 40039); 1♀, P. Bacan, Wajaua, 28.vi.1953, collector unknown. (MZB, Coleopt. No. 40032).
- 112. *Gnoma pulverea* Pascoe (Pl. 23, fig. 112)**  
Specimen examined: 1♀, Java, Nanggala, iv.1938, F.C. Drescher leg. (MZB, Coleopt. No. 40159).
- 113. *Gnoma thomsoni* Dillon et Dillon (Pl. 23, fig. 113)**  
Specimen examined: 1♂, Java, Baturaden, G. Slamet, vii.1926, F.C. Drescher leg. (MZB, Coleopt. No. 40179).
- 114. *Gnoma sticticollis* Thomson (Pl. 23, fig. 114)**  
Specimen examined: 1♂, Java, G. Guntur, vii.1926, F.C. Drescher leg. (MZB, Coleopt. No. 40157).
- 115. *Gnoma zonaria* (Linnaeus) (Pl. 23, fig. 115)**  
Specimen examined: 1♂, P. Ambon, Waai, 7.vii.1959, A.M.R. Wegner leg. (MZB, Coleopt. No. 40193).
- 116. *Gnoma confusa* Thomson (Pl. 23, fig. 116)**  
Specimen examined: 1♀, E. Borneo, 125 m, Tabang, Bengen River, 19.ix.1956, A.M.R. Wegner leg. (MZB, Coleopt. No. 43653).
- 117. *Imantocera grisescens* Aurivillius (Pl. 24, fig. 117)**  
Specimen examined: 1♂, Java, Nusakambangan, iii.1926, F.C. Drescher leg. (MZB, Coleopt. No. 42006).
- 118. *Imantocera plumosa* Olivier (Pl. 24, fig. 118)**  
Specimen examined: 1♀, E. Borneo, 95 m, Gunung Sari, 16.viii.1956, A.M.R. Wegner leg. (MZB, Coleopt. No. 42000).
- 119. *Psectrocera plumigera* Westwood (Pl. 24, fig. 119)**  
Specimen examined: 1♂, Java, Baturaden, G. Slamet, vi.1928, F.C. Drescher leg. (MZB, Coleopt. No. 42009).
- 120. *Cylindropomus grammicus* Pascoe (Pl. 25, fig. 120)**  
Specimen examined: 1♀, P. Ambon, Waai, 16.ix.1953, A.M.R. Wegner leg. (MZB, Coleopt. No. 43371).
- 121. *Cylindropomus peregrinus* Pascoe (Pl. 25, fig. 121)**  
Specimen examined: 1♂, Java, Nusakambangan, ii.1926, F.C. Drescher leg. (MZB, Coleopt. No. 43367).
- 122. *Cylindropomus rubriceps* Aurivillius (Pl. 25, fig. 122)**  
Specimen examined: 1♂, Java, Baturaden, G. Slamet, vii.1927, F.C. Drescher leg. (MZB, Coleopt. No. 43369).
- 123. *Nyctimenius varicornis* (Fabricius) (Pl. 25, figs. 123 & 123')**  
Specimens examined: 1♂, Zuidkust Java, Babakan, 10 m, i.1939, K. Benner leg. (MZB, Coleopt. No. 42807); 1♀, E. Borneo, 125 m, Tabang, Bengen River, 12.ix.1956, A.M.R. Wegner leg. (MZB, Coleopt. No. 43917).
- 124. *Amblymora obiensis* Breuning (Pl. 26, fig. 124)**  
Specimen examined: 1♂, Maruku, P. Obi, Laiwui, 10.x.1953, collector unknown. (MZB, Coleopt. No. 43275).
- 125. *Ectatosia moorei* Pascoe (Pl. 26, fig. 125)**  
Specimen examined: 1♀, E. Borneo, 125 m, Tabang, Bengen River, 28.ix.1956, A.M.R. Wegner leg. (MZB,

- Coleopt. No. 43567).
126. *Glenea* (s. str.) *spinifera* Voet var. *hygia* Thomson (Pl. 26, fig. 126)  
Specimen examined: 1♂, P. Ambon, Waai, 17.vii.1959, A.M.R. Wegner leg. (MZB, Coleopt. No. 39269).
127. *Glenea* (s. str.) *bedoei* Pic var. *javaensis* Gilmour et Breuning (Pl. 26, fig. 127)  
Specimen examined: 1♂, Holotype, Nusakambangan, ii.1937, F.C. Drescher leg. (MZB, Coleopt. No. 2632).  
This species red-tagged a specimen for the holotype, is a question of being in manuscript.
128. *Glenea* (*Acutoglenea*) *acuta* (Fabricius) (Pl. 26, figs. 128 & 128')  
Specimens examined: 1♂, Baturaden, G. Slamet, Java, ii.1926, F.C. Drescher leg. (MZB, Coleopt. No. 38455); 1♀, W. Java, Ujung Kulon, 12.xi.1958, A.M.R. Wegner leg. (MZB, Coleopt. No. 38626).
129. *Glenea* (s. str.) *ochraceovittata* Thomson (Pl. 27, fig. 129)  
Specimen examined: 1♀, Zuidkust Java, Babakan, 10 m, Data unknown, K. Benner leg. (MZB, Coleopt. No. 38464).
130. *Glenea* (s. str.) *amboynica* Thomson (Pl. 27, fig. 130)  
Specimen examined: 1♀, P. Ambon, Waai, 30.vi.1959, A.M.R. Wegner leg. (MZB, Coleopt. No. 38505).
131. *Glenea* (*Stiroglenea*) *angerona* Thomson (Pl. 27, fig. 131)  
Specimen examined: 1♀, i.1932, Nusakambangan, F.C. Drescher leg. (MZB, Coleopt. No. 38669).
132. *Glenea* (s. str.) *algebraica* Thomson var. *mediovittata* Pic (Pl. 27, fig. 132)  
Specimen examined: 1♂, W. Java, W. Preanger, 7.xii.1941, Groemendael leg. (MZB, Coleopt. No. 38690).
133. *Glenea* (s. str.) *anticepunctata* Thomson (Pl. 27, figs. 133 & 133')  
Specimens examined: 1♂, 1♀, E. Borneo, 125 m, Tabang, Bengen River, 1.x.1956, A.M.R. Wegner leg. (MZB, Coleopt. No. 38468; 38826).
134. *Glenea* (s. str.) *bimaculicollis* Thomson (Pl. 28, fig. 134)  
Specimen examined: 1♂, P. Bacan, Wajaua, 15.vi.1953, collector unknown, (MZB, Coleopt. No. 38470).
135. *Glenea* (s. str.) *blandina* Pascoe (Pl. 28, fig. 135)  
Specimen examined: 1♀, E. Borneo, 125 m, Tabang, Bengen River, 9.ix.1956, A.M.R. Wegner leg. (MZB, Coleopt. No. 39244).
136. *Glenea* (s. str.) *dejeani* Breuning (Pl. 28, fig. 136)  
Specimen examined: 1♀, Nusakambangan, v.1928, F.C. Drescher leg. (MZB, Coleopt. No. 38440).
137. *Glenea* (s. str.) *despecta* Breuning var. *albitarsis* Pic (Pl. 28, fig. 137)  
Specimen examined: 1♂, E. Borneo, 125 m, Tabang, Bengen River, 6.x.1956, A.M.R. Wegner leg. (MZB, Coleopt. No. 38887).
138. *Glenea* (s. str.) *doriae* Breuning var. *discomediopunctata* Breuning (Pl. 28, fig. 138)  
Specimen examined: 1♂, E. Borneo, 125 m, Tabang, Bengen River, 9.ix.1956, A.M.R. Wegner leg. (MZB, Coleopt. No. 38891).
139. *Glenea* (*Acutoglenea*) *extensa* Pascoe (Pl. 28, fig. 139)  
Specimen examined: 1♀, E. Borneo, 125 m, Tabang, Bengen River, 5.ix.1956, A.M.R. Wegner leg. (MZB, Coleopt. No. 38906).
140. *Glenea* (*Macroglenea*) *elegans* Olivier var. *delia* Thomson (Pl. 29, fig. 140)  
Specimen examined: 1♂, Java, Outvangen, 1941, Bartels leg. (MZB, Coleopt. No. 39261).
141. *Glenea* (s. str.) *funerula* Thomson var. *javana* Pic (Pl. 29, fig. 141)  
Specimen examined: 1♂, E. Borneo, 125 m, Tabang, Bengen River, 7.ix.1956, A.M.R. Wegner leg. (MZB, Coleopt. No. 38944).
142. *Glenea* (s. str.) *grisea* Thomson (Pl. 29, fig. 142)  
Specimen examined: 1♀, P. Ambon, Waai, 16.ix.1959, A.M.R. Wegner leg. (MZB, Coleopt. No. 38450).
143. *Glenea* (s. str.) *heptagona* Thomson (Pl. 29, fig. 143)  
Specimen examined: 1♂, P. Bacan, Wajaua, 28.vi.1953, collector unknown. (MZB, Coleopt. No. 39074).
144. *Glenea* (s. str.) *manto* Pascoe var. *colloroides* Breuning (Pl. 29, fig. 144)  
Specimen examined: 1♀, Java, Baturaden, G. Slamet, v.1927, F.C. Drescher leg. (MZB, Coleopt. No. 38445).
145. *Glenea* (s. str.) *mathematica* Thomson (Pl. 29, fig. 145)  
Specimen examined: 1♂, Java, Baturaden, G. Slamet, vii.1927, F.C. Drescher leg. (MZB, Coleopt. No. 38461).
146. *Glenea* (s. str.) *nigrifrons* Aurivillius (Pl. 30, fig. 146)  
Specimen examined: 1♀, E. Borneo, 125 m, Tabang, Bengen River, 2.ix.1956, A.M.R. Wegner leg. (MZB, Coleopt. No. 39139).
147. *Glenea* (s. str.) *novemguttata* Guérin (Pl. 30, fig. 147)  
Specimen examined: 1♀, W. Java, Ujung Kulon, Cigeunteur, 14.x.1955, A.M.R. Wegner leg. (MZB, Coleopt. No. 39141).
148. *Glenea* (s. str.) *pascoei* Aurivillius (Pl. 30, fig. 148)  
Specimen examined: 1♂, E. Borneo, 125 m, Tabang, Bengen River, 8.ix.1956, A.M.R. Wegner leg. (MZB, Coleopt. No. 39190).
149. *Glenea* (s. str.) *plagicollis* Aurivillius var. *laterinigracollis* Breuning (Pl. 30, fig. 149)  
Specimen examined: 1♀, E. Borneo, 95 m, Tabang, Bengen River, 25.viii.1956, A.M.R. Wegner leg. (MZB, Coleopt. No. 39195).
150. *Glenea* (s. str.) *pulchella* Pascoe (Pl. 30, fig. 150)  
Specimen examined: 1♀, E. Borneo, 125 m, Tabang, Bengen River, 2.x.1956, A.M.R. Wegner leg. (MZB,

- Coleopt. No. 38463).
151. *Glenea* (s. str.) *quinquevittata* Aurivillius var. *fuscotibialis* Breuning (Pl. 30, fig. 151)  
Specimen examined: 1♂, E. Borneo, 125 m, Tabang, Bengen River, 19.ix.1956, A.M.R. Wegner leg. (MZB, Coleopt. No. 38454).
152. *Glenea* (*Reginoglenea*) *regina* Thomson (Pl. 31, fig. 152)  
Specimen examined: 1♂, E. Borneo, 125 m, Tabang, Bengen River, 6.x.1956, A.M.R. Wegner leg. (MZB, Coleopt. No. 38198).
153. *Glenea* (s. str.) *signatifrons* Gahan var. *antereducta* Breuning (Pl. 31, fig. 153)  
Specimen examined: 1♀, Java, Baturaden, G. Slamet, ii.1927, F.C. Drescher leg. (MZB, Coleopt. No. 38476).
154. *Glenea* (s. str.) *saperdoides* Thomson var. *javicola* Breuning (Pl. 31, fig. 154)  
Specimen examined: 1♀, Zuidkust Java, Babakan, 10 m, xii.1937, collector unknown. (MZB, Coleopt. No. 38515).
155. *Glenea* (s. str.) *strigata* Thomson (Pl. 31, fig. 155)  
Specimen examined: 1♀, Java, Baturaden, G. Slamet, ii.1928, F.C. Drescher leg. (MZB, Coleopt. No. 38442).
156. *Glenea* (s. str.) *trasversicollis* Gilmour et Breuning (Pl. 31, fig. 156)  
Specimen examined: 1♀, Holotype, Java, Baturaden, G. Slamet, F.C. Drescher leg. (MZB, Coleopt. No. 2669).  
This species red-tagged a specimen for the holotype, is a question of being in manuscript.
157. *Glenea* (s. str.) *venusta* Guérin var. *viridicincta* Boisd. (Pl. 31, fig. 157)  
Specimen examined: 1♂, P. Ambon, Waai, 13.ix.1959, A.M.R. Wegner leg. (MZB, Coleopt. No. 39509).
158. *Pseudoglenea* *densepuncticollis* Gilmour et Breuning (Pl. 32, fig. 158)  
Specimen examined: 1♀, Paratype, E. Borneo, 125 m, Tabang, Bengen River, 21.x.1956, A.M.R. Wegner leg. (MZB, Coleopt. No. 2662).
159. *Oberea* (*Amamastoma*) *curialis* Pascoe (Pl. 32, fig. 159)  
Specimen examined: 1♀, West Java, West Banten, x.1930, L.J. Toxopeus leg. (MZB, Coleopt. No. 39283).
160. *Oberea* *denominata* Plavilstschikov (Pl. 32, fig. 160)  
Specimen examined: 1♀, E. Borneo, 125 m, Tabang, Bengen River, 6.x.1956, A.M.R. Wegner leg. (MZB, Coleopt. No. 39303).
161. *Oberea* *formosana* *spinipennis* Breuning (Pl. 32, fig. 161)  
Specimen examined: 1♂, E. Borneo, 125 m, Tabang, Bengen River, 28.viii.1956, A.M.R. Wegner leg. (MZB, Coleopt. No. 39330).
162. *Oberea* *nigriventris* Bates var. *angustatissima* Pic (Pl. 33, fig. 162)  
Specimen examined: 1♀, West Java, Jampang Tengah, Cinnerang, 10-24.iv.1940, Groenendael leg. (MZB, Coleopt. No. 39428).
163. *Oberea* *pontianakensis* Breuning (Pl. 33, fig. 163)  
Specimen examined: 1♀, E. Borneo, 125 m, Tabang, Bengen River, 3.x.1956, A.M.R. Wegner leg. (MZB, Coleopt. No. 39447).
164. *Oberea* *rubetra* Pascoe var. *lusciosa* Pascoe (Pl. 33, fig. 164)  
Specimen examined: 1♂, E. Borneo, Gunung Sari, 14.viii.1956, A.M.R. Wegner leg. (MZB, Coleopt. No. 39485).
165. *Oberea* *sobrina* Pascoe var. *commoda* Pascoe (Pl. 33, fig. 165)  
Specimen examined: 1♀, P. Buru, Balu-balau, 19.vi.1959, A.M.R. Wegner leg. (MZB, Coleopt. No. 39490).
166. *Schoenionta* *strigosa* Pascoe (Pl. 33, fig. 166)  
Specimen examined: 1♀, E. Borneo, 125 m, Tabang, Bengen River, 19.ix.1956, A.M.R. Wegner leg. (MZB, Coleopt. No. 43568).
167. *Nupserha* *fricator* *producta* Schwarzer (Pl. 34, fig. 167)  
Specimen examined: 1♂, Java, Baturaden, G. Slamet, xii.1925, F.C. Drescher leg. (MZB, Coleopt. No. 42884).
168. *Nupserha* *oxyura* *pallidiventris* Breuning (Pl. 34, fig. 168)  
Specimen examined: 1♀, E. Borneo, 125 m, Tabang, Bengen River, 13.x.1956, A.M.R. Wegner leg. (MZB, Coleopt. No. 42910).
169. *Bacchisa* *babakensis* Gilmour et Breuning (Pl. 34, figs. 169 & 169')  
Specimen examined: 1♂, Holotype, Babakan, 10 m, Zuidkust Java, Data unknown, K. Benner leg. (MZB, Coleopt. No. 2624); 1♀, same locality & collector as the holotype. (MZB, Coleopt. No. 2625).  
This species red-tagged a specimen for the holotype, is a question of being in manuscript.
170. *Astathes* (*Tetraophthalmus*) *javaensis* Gilmour et Breuning (Pl. 34, figs. 170 & 170')  
Specimen examined: 1♂, Holotype, Java, Nanggala, iv.1939, F.C. Drescher leg. (MZB, Coleopt. No. 2620); 1♀, Paratype, same locality, data & collector as the holotype. (MZB, Coleopt. No. 2621).
171. *Astathes* *cincta* Gahan (Pl. 35, fig. 171)  
Specimen examined: 1♀, Java, 1946, Bartel leg. (MZB, Coleopt. No. 39559).
172. *Astathes* *dimidiata* Gory (Pl. 35, fig. 172)  
Specimen examined: 1♀, E. Borneo, Gunung Sari, 22.viii.1956, A.M.R. Wegner leg. (MZB, Coleopt. No. 39565).
173. *Astathes* *ignorantina* Thomson (Pl. 35, fig. 173)  
Specimen examined: 1♂, E. Borneo, 125 m, Tabang, Bengen River, 2.x.1956, A.M.R. Wegner leg. (MZB, Coleopt. No. 39577).
174. *Astathes* *japonica* *unicolor* Pascoe (Pl. 35, fig. 174)  
Specimen examined: 1♀, E. Borneo, 125 m, Tabang, Bengen River, 9.viii.1956, A.M.R. Wegner leg. (MZB, Coleopt. No. 39615).

**175. *Astathes terminata javanica* Aurivillius (Pl. 35, fig. 175)**

Specimen examined: 1♀, E. Borneo, 125 m, Tabang, Bengen River, 8.ix.1956, A.M.R. Wegner leg. (MZB, Coleopt. No. 39692).

**176. *Astathes bipartita perversa* Gahan (Pl. 35, fig. 176)**

Specimen examined: 1♂, E. Borneo, 125 m, Tabang, Bengen River, 3.x.1956, A.M.R. Wegner leg. (MZB, Coleopt. No. 39711).

**177. *Astathes velata* Thomson (Pl. 36, fig. 177)**

Specimen examined: 1♀, W. Java, Cidaon, Ujung Kulon, 1.xii.1958, A.M.R. Wegner leg. (MZB, Coleopt. No. 39783).

**178. *Eustathes javaensis* Gilmour et Breuning (Pl. 36, figs. 178 & 178')**

Specimens examined: 1♂, Holotype, Java, Nanggala, v.1938, F.C. Drescher leg. (MZB, Coleopt. No. 2628); 1♀, Paratype, same locality, data & collector as the holotype. (MZB, Coleopt. No. 2629).

This species red-tagged a specimen for the holotype, is a question of being in manuscript.

**179. *Parastathes apicalis* Aurivillius var. *fuscoampliata* Breuning (Pl. 36, fig. 179)**

Specimen examined: 1♂, E. Borneo, 95 m, Gunung Sari, 14.viii.1956, A.M.R. Wegner. (MZB, Coleopt. No. 43945).

**Acknowledgement**

Without the cooperation of many people and institutions in Indonesia and Japan, it would not have been possible to make this report. We wish to express our sincere to Dr. Arie Budiman of Puslit Biologi – LIPI, Dr. Siti Nuramaliati Prijono, Head of Bidang Zoologi, Puslit Biologi –LIPI, and Dr. T. Toma of CIFOR for their encouragement to carry out our study. Our thanks due to Messors Endang Cholikh, M. Rofik Sofyan, Sarino, Darmawan and Rina Rahmatiah for their cooperation in Bidang Zoologi. Finally we wish to thank to Dr. Kimiko Okabe and Mses Ayako Tsubokawa and Megumi Hashida of the FFPRI, Japan for their support and help.

**References**

Gilmour, E.F. and Breuning, S. (1963) New Indonesian lamiinae (Coleoptera, Cerambycidae). *Treubia*, 26, 123-132.



Plate 1



1. *Cyrtanops punctipennis*  
White (♂)  
Body length 14.9 mm.



Ditto, lateral view



2. *Macrotoma (Zooblast)*  
*serricollis* Thomson (♂)  
Body length 49.0 mm.



Ditto, lateral view



3. *Megopis (Baralipton)*  
*marginalis* (Fabricius)  
(♂)  
Body length 20.7 mm.



Ditto, lateral view



4. *Megopis (Baralipton)*  
*costata* (Lansberge) (♂)  
Body length 17.1 mm.



Ditto, lateral view



5. *Prionomma (Ancyloprotus)*  
*javanum* Lansberge (♀)  
Body length 39.4 mm.



Ditto, lateral view



6. *Dorysthenes (Lophosternus)*  
*buqueti* Guérin (♂)  
Body length 24.7 mm.



Ditto, lateral view

## Plate 2



7. *Dejanira quadripunctata*  
Thomson (♂)  
Body length 28.7mm.



Ditto, lateral view



8. *Xystrocera festiva*  
Thomson (♀)  
Body length 26.7mm.



Ditto, lateral view



9. *Xystrocera globosa*  
Olivier (♂)  
Body length 16.8mm.



Ditto, lateral view



10. *Stromatium longicorne*  
Westwood (♂)  
Body length 22.0mm.



Ditto, lateral view



11. *Coptocercus biguttatus*  
Donovan (♂)  
Body length 19.1mm.



Ditto, lateral view

Plate 3



12. *Aeolesthes induta*  
(Newman) (♂)  
Body length 29.9 mm.



Ditto, lateral view



12'. *Aeolesthes induta*  
(Newman) (♀)  
Body length 30.2 mm.



Ditto, lateral view



13. *Zathrephus javanicus*  
Fisher (♂)  
Body length 22.1 mm.



Ditto, lateral view



14. *Rhytidodera integra*  
Kolbe (♀)  
Body length 24.4 mm.



Ditto, lateral view



15. *Pachylocerus pilosus*  
Guérin (♀)  
Body length 17.1 mm.



Ditto, lateral view



16. *Lachnopterus*  
*auripennis* Newman  
(♀)  
Body length 17.7 mm.



Ditto, lateral view

## Plate 4



17. *Thranius sumatrensis*  
Gahan (♀)  
Body length 19.3 mm.



Ditto, lateral view



18. *Chloridolum*  
*promissum* Pascoe (♂)  
Body length 13.3 mm.



Ditto, lateral view



19. *Pachyteria rugosicollis*  
Ritsema (♀)  
Body length 21.0 mm.



Ditto, lateral view



20. *Coloborhambus*  
*drescheri* Fisher (♀)  
Body length 28.4 mm.



Ditto, lateral view



21. *Eurybatus*  
*decempunctatus*  
Westwood (♀)  
Body length 18.8 mm.



Ditto, lateral view



22. *Euryclelia cardinalis*  
Thomson (♀)  
Body length 19.5 mm.



Ditto, lateral view

Plate 5



**23. *Euryphagus lundii***  
**(Fabricius) (♀)**  
Body length 19.4 mm.



Ditto, lateral view



**24. *Chlorophorus annularis***  
**(Fabricius)**  
**(♀)**  
Body length 14.8 mm.



Ditto, lateral view



**25. *Xylotrechus australis***  
**(Castelnau et Gory)**  
**(♀)**  
Body length 13.0 mm.



Ditto, lateral view



**26. *Perissus glaucinus***  
**Boisd. (♀)**  
Body length 12.6 mm.



Ditto, lateral view

## Plate 6



27. *Anancylus griseatus*  
Pascoe (♀)  
Body length 14.0 mm.



Ditto, lateral view



28. *Choelomorpha pigra*  
(Aurivillius) (♀)  
Body length 17.6 mm.



Ditto, lateral view



29. *Cacia picticornis*  
Pascoe (♂)  
Body length 8.5 mm.



Ditto, lateral view



30. *Cacia (Ipocregyes)*  
*bituberosa* Breuning  
(♀)  
Body length 12.1 mm.



Ditto, lateral view



31. *Cacia (Cacia) curta*  
Breuning (♂)  
Body length 8.1 mm.



Ditto, lateral view



32. *Cacia (Cacia) inculta*  
Pascoe (♂)  
Body length 9.5 mm.



Ditto, lateral view

Plate 7



33. *Cacia (Ipocregyes) setulosa* Pascoe (♂)  
Body length 10.8 mm.

Ditto, lateral view



34. *Agelasta (Epagelasta) bolteata* Pascoe (♂)  
Body length 8.5 mm.

Ditto, lateral view



35. *Coptops illiata* Pascoe (♂)  
Body length 13.0 mm.

Ditto, lateral view



36. *Coptops lichenea* Pascoe (♂)  
Body length 11.7 mm.

Ditto, lateral view



37. *Coptops undulata* Pascoe (♂)  
Body length 12.1 mm.

Ditto, lateral view



38. *Mutatocoptops albopictus* Pic (♂)  
Body length 14.1 mm.

Ditto, lateral view

## Plate 8



39. *Paracoptops rufoantennata* Gilmour et Breuning (♂)  
Body length 19.0 mm.



Ditto, lateral view



40. *Mulciber linnei* Thomson (♀)  
Body length 21.9 mm.



Ditto, lateral view



41. *Metamulciber buruensis* Gilmour et Breuning (♂)  
Body length 19.2 mm.



Ditto, lateral view



42. *Trachelophora cervicollis* Pascoe (♂)  
Body length 22.0 mm.



Ditto, lateral view



43. *Trachelophora maculosa* Aurivillius (♂)  
Body length 14.8 mm.



Ditto, lateral view



44. *Apomecyna cretacea* Hope (♀)  
Body length 13.0 mm.



Ditto, lateral view



Plate 9



45. *Apomecyna longicollis*  
Pic (♂)  
Body length 7.6 mm.



Ditto, lateral view



46. *Apomecyna saltator tonkinea* Pic (♀)  
Body length 10.0 mm.



Ditto, lateral view



47. *Apomecyna tigrina*  
Thomson (♀)  
Body length 13.4 mm.



Ditto, lateral view



48. *Atimura bacillima*  
Pascoe (♂)  
Body length 10.0 mm.



Ditto, lateral view



49. *Sybra alternans*  
Wiedemann (♀)  
Body length 7.5 mm.



Ditto, lateral view



50. *Sybra binotata* Gahan  
(♂)  
Body length 4.2 mm.



Ditto, lateral view

## Plate 10



51. *Sybra incana* Pascoe  
(♀)  
Body length 6.7 mm.



Ditto, lateral view



52. *Sybra lineatipennis*  
Breuning (♂)  
Body length 7.1 mm.



Ditto, lateral view



53. *Sybra quadripunctata*  
Breuning (♂)  
Body length 6.1 mm.



Ditto, lateral view



54. *Sybra rouyeri* Pic (♂)  
Body length 7.5 mm.



Ditto, lateral view



55. *Sybra trapezoidalis*  
Breuning (♀)  
Body length 5.7mm.



Ditto, lateral view



56. *Ropica honesta* Pascoe  
(♀)  
Body length 5.6mm.

Plate 11



57. *Ropica javanica*  
Breuning (♂)  
Body length 6.1 mm.



58. *Ropica servilis* Pascoe  
(♂)  
Body length 4.6 mm.



Ditto, lateral view



59. *Ropica strandi*  
Breuning (♂)  
Body length 5.9 mm.



Ditto, lateral view



60. *Ropica transversemaculata*  
Breuning (♀)  
Body length 8.3 mm.



Ditto, lateral view



61. *Athylia venosa* Pascoe  
(♂)  
Body length 4.0 mm.



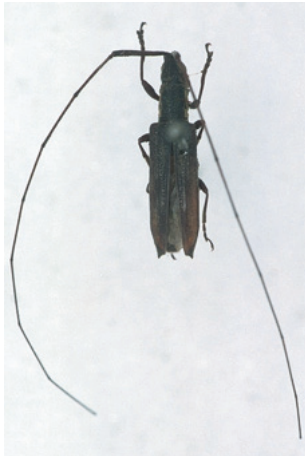
Ditto, lateral view

Plate 12



62. *Cleptomtopus montanus* Pascoe (♀)  
Body length 14.4 mm.

Ditto, lateral view



63. *Cleptomtopus javanicus* Breuning (♂)  
Body length 9.0 mm.

Ditto, Large scale

Ditto, lateral view



64. *Cleptomtopus striatopunctatus* Breuning (♀)  
Body length 11.5 mm.

Ditto, lateral view



65. *Anandra griceipennis* Gilmour et Breuning (♂)  
Body length 9.17 mm.

Ditto, lateral view

Plate 13



66. *Pothyne capito* Pascoe  
(♀)  
Body length 15.3 mm.



Ditto, Large scale



Ditto, lateral view



67. *Pothyne vittata*  
*Aurivillius* (♂)  
Body length 14.0 mm.



Ditto, lateral view



68. *Tetraglenes hirticornis*  
(Fabricius) (♀)  
Body length 11.4 mm.



Ditto, lateral view



69. *Pterolophia melanura*  
(Pascoe) (♀)  
Body length 11.7 mm.



Ditto, lateral view



70. *Pterolophia flavoapicalis* Gilmour  
et Breuning (♂)  
Body length 10.1 mm.



Ditto, lateral view

## Plate 14



71. *Cenodocus antennatus*  
Thomson (♂)  
Body length 9.4 mm.



Ditto, lateral view



72. *Niphona plagifera*  
Aurivillius (♀)  
Body length 12.2 mm.



Ditto, lateral view



73. *Niphonoclea*  
*illicebrosa* Pascoe (♀)  
Body length 12.9 mm.



Ditto, lateral view



74. *Daxata (Taxada)*  
*confusa* Pascoe (♂)  
Body length 17.9 mm.



Ditto, lateral view



75. *Dystasia variegata*  
Fisher (♂)  
Body length 13.4 mm.



Ditto, lateral view



76. *Grammoechus*  
*bipartius* Rits. m.  
*vittatus* (Fisher) (♂)  
Body length 13.8 mm.



Ditto, lateral view

Plate 15



77. *Grammoechus javanicus* Breuning (♂)  
Body length 13.8 mm.



Ditto, lateral view



78. *Grammoechus polygrammus* Thomson (♀)  
Body length 15.0 mm.



Ditto, lateral view



79. *Grammoechus strenuus* Thomson (♀)  
Body length 13.0 mm.



Ditto, lateral view



80. *Millothris irrorata* (Fabricius) (♀)  
Body length 10.1 mm.



Ditto, lateral view



81. *Stesilea prolata* Pascoe (♀)  
Body length 13.9 mm.



Ditto, lateral view



82. *Sthenias franciscanus* Thomson (♀)  
Body length 16.2 mm.



Ditto, lateral view

## Plate 16



83. *Tmesisternus glaucus*  
Pascoe (♀)  
Body length 18.5 mm.



Ditto, lateral view



84. *Tmesisternus lotor*  
Pascoe (♀)  
Body length 17.0 mm.



Ditto, lateral view



85. *Tmesisternus*  
(*Arrhenotus*) *wallacei*  
Pascoe (♂)  
Body length 9.8 mm.



Ditto, lateral view



86. *Trachystola*  
*scabripennis* Pascoe  
(♂)  
Body length 15.2 mm.



Ditto, lateral view



87. *Epicedia maculatrix*  
Perty (♀)  
Body length 20.8 mm.



Ditto, lateral view



88. *Epicedia trimaculata*  
Chevrolat (♀)  
Body length 26.3 mm.



Ditto, lateral view



Plate 17



89. *Epepeotes luscus* F.  
var. *subuniformis*  
Gilmour et Breuning  
(♀)  
Body length 20.5 mm.



Ditto, lateral view



90. *Myagrus spinosus*  
Pascoe (♂)  
Body length 14.4 mm.



Ditto, lateral view



91. *Euthyastus binotatus*  
Pascoe (♂)  
Body length 17.4 mm.



Ditto, lateral view



91'. *Euthyastus binotatus*  
Pascoe (♀)  
Body length 14.7 mm.



Ditto, lateral view



92. *Pharsalia mortalis*  
Thomson (♂)  
Body length 16.9 mm.



Ditto, lateral view



Ditto, large scale



Ditto, lateral view

## Plate 18



93. *Pharsalia saperdoides*  
Pascoe (♀)  
Body length 15.0 mm.



Ditto, lateral view



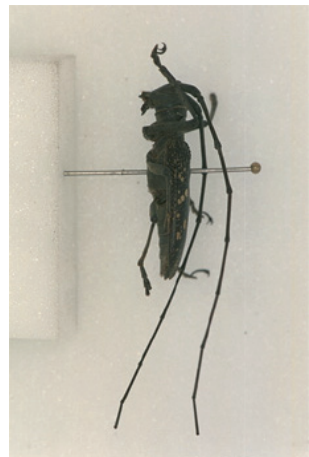
94. *Nephelotus conspersus*  
Thomson (♂)  
Body length 18.7 mm.



Ditto, lateral view



95. *Anhammus daleni*  
Guérin (♂)  
Body length 23.0 mm.



Ditto, lateral view



Ditto, large scale



Ditto, lateral view



96. *Anoplophora medembachi*  
Rits. (♀)  
Body length 24.6 mm.



Ditto, lateral view



97. *Acalolepta cariosa*  
(Pascoe) (♂)  
Body length 18.4 mm.



Ditto, lateral view

Plate 19



98. *Acalolepta ternatensis*  
Breuning (♀)  
Body length 17.4 mm.



Ditto, lateral view



99. *Acalolepta rusticatrix*  
(Fabricius) (♂)  
Body length 16.0 mm.



Ditto, lateral view



100. *Cereopsius luhuanus*  
*aequifasciatus*  
Breuning et de Jong  
(♀)  
Body length 18.7 mm.



Ditto, lateral view



101. *Cereopsius javanus*  
Breuning (♀)  
Body length 12.2 mm.



Ditto, lateral view



Ditto, large scale



Ditto, lateral view

## Plate 20



102. *Cereopsius kulzeri*  
Breuning (♂)  
Body length 16.7 mm.

Ditto, lateral view

Ditto, large scale

Ditto, lateral view



103. *Cereopsius*  
*sexmaculatus*  
Aurivillus (♂)  
Body length 18.0 mm.

Ditto, lateral view

Ditto, large scale

Ditto, lateral view



104. *Pelargoderus*  
*bipunctatus* Gahan  
(♂)  
Body length 23.3 mm.

Ditto, lateral view

Plate 21



105. *Batocera tigris* var. *hector* Thomson (♂)  
Body length 50.4 mm.



Ditto, lateral view



106. *Batocera thomsoni* *bipunctata* Breuning (♀)  
Body length 34.2mm.



Ditto, lateral view



107. *Batocera victoriana* Thomson (♀)  
Body length 51.8 mm.



Ditto, lateral view



108. *Palimna annulata* Olivier (♀)  
Body length 16.1 mm.



Ditto, lateral view



Ditto, large scale



Ditto, lateral view

## Plate 22



109. *Moechotypa javanica*  
Schwarzer (♀)  
Body length 18.2 mm.

Ditto, lateral view



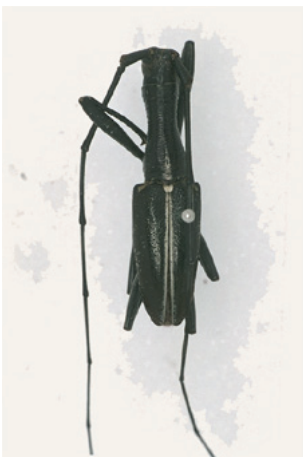
110. *Gnoma affinis*  
Guérin (♂)  
Body length 19.4 mm.

Ditto, lateral view



110'. *Gnoma affinis*  
Guérin (♀)  
Body length 17.7 mm.

Ditto, lateral view



111. *Gnoma agroides*  
Thomson (♂)  
Body length 16.1 mm.

Ditto, lateral view



111'. *Gnoma agroides*  
Thomson (♀)  
Body length 15.9 mm.

Ditto, lateral view

Plate 23



112. *Gnoma pulverea*  
Pascoe (♀)  
Body length 17.1 mm.



Ditto, lateral view



113. *Gnoma thomsoni*  
Dillon et Dillon (♂)  
Body length 12.6 mm.



Ditto, lateral view



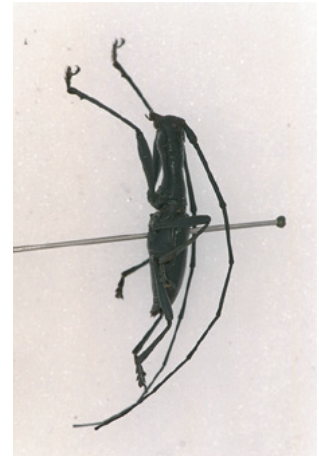
114. *Gnoma sticticollis*  
Thomson (♂)  
Body length 21.8 mm.



Ditto, lateral view



115. *Gnoma zonaria*  
(Linnaeus) (♂)  
Body length 19.7 mm.



Ditto, lateral view



116. *Gnoma confusa*  
Thomson (♀)  
Body length 14.3 mm.



Ditto, lateral view

## Plate 24



117. *Imantocera*  
*grisescens* Aurivillius  
(♂)  
Body length 15.3 mm.

Ditto, lateral view

Ditto, large scale

Ditto, lateral view



118. *Imantocera*  
*plumosa*  
Oliver (♀)  
Body length 14.2 mm.

Ditto, lateral view

Ditto, large scale

Ditto, lateral view



119. *Psectrocera*  
*plumigera* Westwood  
(♂)  
Body length 15.1 mm.

Ditto, lateral view



Plate 25



120. *Cyliodromus grammicus* Pascoe (♀)  
Body length 12.2 mm.



Ditto, lateral view



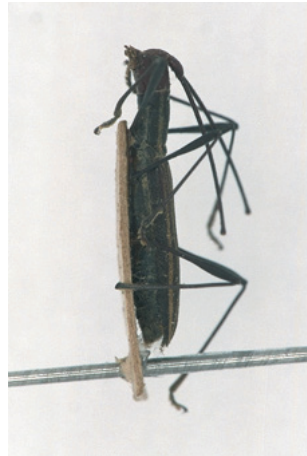
121. *Cyliodromus peregrinus* Pascoe (♂)  
Body length 9.4 mm.



Ditto, lateral view



122. *Cyliodromus rubriceps* Aurivillius (♂)  
Body length 10.6 mm.



Ditto, lateral view



123. *Nyctimenius varicornis* (Fabricius) (♂)  
Body length 8.9 mm.



Ditto, lateral view



123'. *Nyctimenius varicornis* (Fabricius) (♀)  
Body length 12.3 mm.



Ditto, lateral view

## Plate 26



124. *Amblymora obiensis*  
Breuning (♂)  
Body length 9.7 mm.

Ditto, lateral view



125. *Ectatosia moorei*  
Pascoe (♀)  
Body length 21.7 mm.

Ditto, lateral view



126. *Glenea* (s.str.)  
*spinifera* Voet var.  
*hygia* Thomson (♂)  
Body length 20.2 mm.

Ditto, lateral view



127. *Glenea* (s.str.) *bedoei*  
Pic var. *javaensis*  
Gilmour et Breuning  
(♂)  
Body length 9.3 mm.

Ditto, lateral view



128. *Glenea* (*Acutoglenea*)  
*acuta* (Fabricius) (♂)  
Body length 9.8 mm.

Ditto, lateral view



128'. *Glenea*  
(*Acutoglenea*) *acuta*  
(Fabricius) (♀)  
Body length 11.9 mm.

Ditto, lateral view

Plate 27



129. *Glenea* (s.str.)  
*ochraceovittata*  
Thomson (♀)  
Body length 12.8 mm.

Ditto, lateral view



130. *Glenea* (s.str.)  
*amboynica* Thomson  
(♀)  
Body length 15.6 mm.

Ditto, lateral view



131. *Glenea* (*Stiroglenea*)  
*angerona* Thomson  
(♀)  
Body length 10.3 mm.

Ditto, lateral view



132. *Glenea* (s.str.)  
*algebraica* Thomson  
var. *mediovittata* Pic  
(♂)  
Body length 10.5 mm.

Ditto, lateral view



133. *Glenea* (s.str.)  
*anticepunctata*  
Thomson (♂)  
Body length 9.6 mm.

Ditto, lateral view



133'. *Glenea* (s.str.)  
*anticepunctata*  
Thomson (♀)  
Body length 10.0 mm.

Ditto, lateral view

## Plate 28



134. *Glenea* (s.str.)  
*bimaculicollis*  
Thomson (♂)  
Body length 10.5 mm.

Ditto, lateral view



135. *Glenea* (s.str.)  
*blandina* Pascoe (♀)  
Body length 10.0 mm.

Ditto, lateral view



136. *Glenea* (s.str.)  
*dejeani* Breuning (♀)  
Body length 12.7 mm.

Ditto, lateral view



137. *Glenea* (s.str.)  
*despecta* Breuning  
var. *albitarsis* Pic (♂)  
Body length 7.3 mm.

Ditto, lateral view



138. *Glenea* (s.str.)  
*doriae*  
Breuning var.  
*discomediopunctata*  
Breuning (♂)  
Body length 10.4 mm.

Ditto, lateral view



139. *Glenea* (*Acutoglenea*)  
*extensa* Pascoe (♀)  
Body length 15.0 mm.

Ditto, lateral view

Plate 29



140. *Glenea (Macroglenea) elegans* Olivier var. *delia* Thomson (♂)  
Body length 20.2 mm.



Ditto, lateral view



141. *Glenea* (s.str.) *funerula* Thomson var. *javana* Pic (♂)  
Body length 14.4 mm.



Ditto, lateral view



142. *Glenea* (s.str.) *grisea* Thomson (♀)  
Body length 12.3 mm.



Ditto, lateral view



143. *Glenea* (s.str.) *heptagona* Thomson (♂)  
Body length 13.7 mm.



Ditto, lateral view



144. *Glenea* (s.str.) *manto* Pascoe var. *collaroides* Breuning (♀)  
Body length 11.3 mm.



Ditto, lateral view



145. *Glenea* (s.str.) *mathematica* Thomson (♂)  
Body length 7.9 mm.



Ditto, lateral view

## Plate 30



146. *Glenea* (s.str.) *nigrifrons* Aurivillius (♀)  
Body length 12.8 mm.



Ditto, lateral view



147. *Glenea* (s.str.) *novemguttata* Guérin (♀)  
Body length 14.3 mm.



Ditto, lateral view



148. *Glenea* (s.str.) *pascoei* Aurivillius (♂)  
Body length 12.6 mm.



Ditto, lateral view



149. *Glenea* (s.str.) *plagicollis* Aurivillius var. *laterinigracollis* Breuning (♀)  
Body length 10.4 mm.



Ditto, lateral view



150. *Glenea* (s.str.) *pulchella* Pascoe (♀)  
Body length 10.8 mm.



Ditto, lateral view



151. *Glenea* (s.str.) *quinquevittata* Auriv. var. *fuscotibialis* Breuning (♂)  
Body length 8.3 mm.



Ditto, lateral view

Plate 31



152. *Glenea (Reginoglenea) regina* Thomson (♂)  
Body length 18.6 mm.



Ditto, lateral view



153. *Glenea (s.str.) signatifrons* Gahan  
var. *antereducta* Breuning (♀)  
Body length 7.8 mm.



Ditto, lateral view



154. *Glenea (s.str.) saperdoides* Thomson  
var. *javicola* Breuning (♀)  
Body length 11.8 mm.



Ditto, lateral view



155. *Glenea (s.str.) strigata* Thomson (♀)  
Body length 11.1 mm.



Ditto, lateral view



156. *Glenea (s.str.) transversicollis*  
Gilmour et Breuning (♀)  
Body length 8.9 mm.



Ditto, lateral view



157. *Glenea (s.str.) venusta* Guérin var.  
*viridicincta* Boisd. (♂)  
Body length 10.2 mm.



Ditto, lateral view

## Plate 32



158. *Pseudoglenea densepuncticollis*  
Gilmour et Breuning  
(♀)  
Body length 12.1 mm.

Ditto, lateral view



159. *Oberea (Amamastoma) curialis* Pascoe (♀)  
Body length 15.1 mm.

Ditto, lateral view



160. *Oberea denominata*  
Plavilstschikov (♀)  
Body length 12.9 mm.

Ditto, lateral view



161. *Oberea formosana spinipennis* Breuning  
(♂)  
Body length 14.6 mm.

Ditto, large scale

Ditto, lateral view



Plate 33



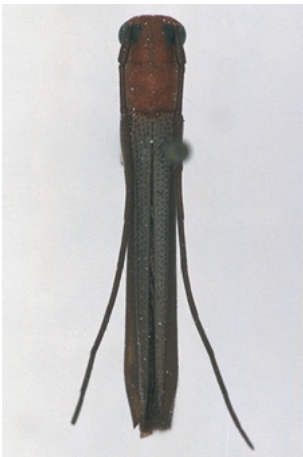
162. *Oberea nigriventris*  
Bates var.  
*angustatissima* Pic (♀)  
Body length 12.1 mm.

Ditto, lateral view



163. *Oberea pontianakensis*  
Breuning (♀)  
Body length 11.5 mm.

Ditto, lateral view



164. *Oberea rubetra*  
Pascoe var. *lusciosa*  
Pascoe (♂)  
Body length 13.8 mm.

Ditto, lateral view



165. *Oberea sobrina*  
Pascoe var. *commoda*  
Pascoe (♀)  
Body length 15.1 mm.

Ditto, lateral view



166. *Schoenionta strigosa*  
Pascoe (♀)  
Body length 20.3 mm.

Ditto, lateral view

## Plate 34



167. *Nupserha fricator producta* Schwarzer (♂)  
Body length 8.6 mm.



Ditto, lateral view



168. *Nupserha oxyura pallidiventris* Breuning (♀)  
Body length 13.6 mm.



Ditto, lateral view



169. *Bacchisa babakensis* Gilmour et Breuning (♂)  
Body length 8.6 mm.



Ditto, lateral view



169'. *Bacchisa babakensis* Gilmour et Breuning (♀)  
Body length 8.1 mm.



Ditto, lateral view



170. *Astathes (Tetraophthalmus) javaensis* Gilmour et Breuning (♂)  
Body length 12.4 mm.



Ditto, lateral view



170'. *Astathes (Tetraophthalmus) javaensis* Gilmour et Breuning (♀)  
Body length 14.0 mm.



Ditto, lateral view

Plate 35



171. *Astathes cincta*  
Gahan (♀)  
Body length 8.3 mm.



Ditto, lateral view



172. *Astathes dimidiata*  
Gory (♀)  
Body length 9.1 mm.



Ditto, lateral view



173. *Astathes ignorantina*  
Thomson (♂)  
Body length 10.1 mm.



Ditto, lateral view



174. *Astathes japonica unicolor* Pascoe (♀)  
Body length 11.2 mm.



Ditto, lateral view



175. *Astathes terminata javanica* Aurivillius  
(♀)  
Body length 11.5 mm.



Ditto, lateral view



176. *Astathes bipartita perversa* Gahan (♂)  
Body length 11.0 mm.



Ditto, lateral view

## Plate 36



177. *Astathes velata*  
Thomson (♀)  
Body length 14.8 mm.



Ditto, lateral view



178. *Eustathes javaensis*  
Gilmour et Breuning  
(♂)  
Body length 14.6 mm.



Ditto, lateral view



178'. *Eustathes javaensis*  
Gilmour et Breuning  
(♀)  
Body length 14.9 mm.



Ditto, lateral view



179. *Parastathes apicalis*  
Aurivillius var.  
*fuscoampliata*  
Breuning (♂)  
Body length 10.3 mm.



Ditto, lateral view

## ギルモア博士同定、ボゴール動物博物館所蔵のインドネシア産 カミキリムシ標本

槇原 寛<sup>1)\*</sup>・WORO A. NOERDJITO<sup>2)</sup>

### 要旨

この報告はギルモア博士同定のカミキリムシ 179 種をカラー写真付きで紹介したものである。ギルモア博士は世界的なカミキリムシの大家で、インドネシアのボゴール動物博物館には彼の同定したカミキリムシの標本が多数ある。そして、この標本は、インドネシア産カミキリムシの同定に大いに役に立つものである。

キーワード：ギルモア博士、インドネシア産カミキリムシ、ボゴール動物博物館

---

\* 森林総合研究所海外研究領域 〒305-8687 茨城県つくば市松の里1 e-mail: makihara@ffpri.affrc.go.jp

1) 森林総合研究所海外研究領域

2) インドネシア科学院生物学研究センター動物学研究所

## Index

Families, Subfamilies, Genera and Subgenera

	Page		Page
<i>Acalolepta</i>	74	<i>Euthyastus</i>	73
<i>Acutoglenea</i>	82,84	<i>Glenea</i> (s. str.)	82
<i>Aeolesthes</i>	59	<i>Gnoma</i>	78
<i>Agelasta</i>	63	<i>Grammoechus</i>	70
<i>Amamastoma</i>	88	<i>Imantocera</i>	80
<i>Amblymora</i>	82	<i>Ipocregyes</i>	62,63
<i>Anancylus</i>	62	<i>Lachnopterus</i>	59
<i>Anandra</i>	68	<i>Lamiinae</i>	41
<i>Ancyloprotus</i>	57	<i>Lophosternus</i>	57
<i>Anhammus</i>	74	<i>Macroglenea</i>	85
<i>Anoplophora</i>	74	<i>Macrotoma</i>	57
<i>Apomecyna</i>	64	<i>Megopis</i>	57
<i>Arrhenotus</i>	72	<i>Metamulciber</i>	64
<i>Astathes</i>	90	<i>Millothris</i>	71
<i>Athylia</i>	67	<i>Moechotypa</i>	78
<i>Atimura</i>	65	<i>Mulciber</i>	64
<i>Bacchisa</i>	90	<i>Mutatocoptops</i>	63
<i>Baralipon</i>	57	<i>Myagrus</i>	73
<i>Batocera</i>	77	<i>Nephelotus</i>	74
<i>Cacia</i>	62	<i>Niphona</i>	70
<i>Cenodocus</i>	70	<i>Niphonoclea</i>	70
<i>Cerambycidae</i>	40	<i>Nupserha</i>	90
<i>Cerambycinae</i>	40	<i>Nyctimenius</i>	81
<i>Cereopsius</i>	75	<i>Oberea</i> ( <i>Amamastoma</i> )	88
<i>Chloridolum</i>	60	<i>Pachylocerus</i>	59
<i>Chlorophorus</i>	61	<i>Pachyteria</i>	60
<i>Choelomorpha</i>	62	<i>Palimna</i>	77
<i>Cleptomtopus</i>	68	<i>Paracoptops</i>	64
<i>Coloborhambus</i>	60	<i>Parastathes</i>	92
<i>Coptocercus</i>	58	<i>Pelargoderus</i>	76
<i>Coptops</i>	63	<i>Perissus</i>	61
<i>Cylindropomus</i>	81	<i>Pharsalia</i>	73
<i>Cyrtonops</i>	57	<i>Pothyne</i>	69
<i>Daxata</i>	70	<i>Prioninae</i>	40
<i>Dejanira</i>	58	<i>Prionomma</i>	57
<i>Disteniidae</i>	40	<i>Psectrocera</i>	80
<i>Dorysthenes</i>	57	<i>Pseudoglenea</i>	88
<i>Dystasia</i>	70	<i>Pterolophia</i>	69
<i>Ectatosia</i>	82	<i>Reginoglenea</i>	87
<i>Epagelasta</i>	63	<i>Rhytidodera</i>	59
<i>Epepeotes</i>	73	<i>Ropica</i>	66
<i>Epicedia</i>	72	<i>Schoenionta</i>	89
<i>Eurybatus</i>	60	<i>Stesilea</i>	71
<i>Euryclelia</i>	60	<i>Sthenias</i>	71
<i>Euryphagus</i>	61	<i>Stromatium</i>	58
<i>Eustathes</i>	92	<i>Sybra</i>	65

	Page		Page
<i>Taxada</i>	70	<i>Trachystola</i>	72
<i>Tetraglenes</i>	69	<i>Xylotrechus</i>	61
<i>Tetraophthalmus</i>	90	<i>Xystrocera</i>	58
<i>Thranius</i>	60	<i>Zathrephus</i>	59
<i>Tmesisternus</i>	72	<i>Zooblax</i>	57
<i>Trachelophora</i>	64		

## Species, Subspecies, varieties and Morpho

	Plate	Figs	Page
<i>acuta</i> (Fabricius)	26	128 & 128'	82
<i>affinis</i> Guérin	22	110 & 110'	78
<i>agroides</i> Thomson	22	111 & 111'	78
<i>albitarsis</i> Pic [ <i>Glenea</i> (s. str.) <i>despecta</i> Breuning var.]	28	137	84
<i>albopictus</i> Pic	7	38	63
<i>algebraica</i> Thomson	27	132	83
<i>alternans</i> Wiedemann	9	49	65
<i>amboynica</i> Thomson	27	130	83
<i>angerona</i> Thomson	27	131	83
<i>angustatissima</i> Pic ( <i>Oberea nigriventris</i> Bates var.)	33	162	89
<i>annularis</i> (Fabricius)	5	24	61
<i>annulata</i> Olivier	21	108	77
<i>antennatus</i> Thomson	14	71	70
<i>antereducta</i> Breuning [ <i>Glenea</i> (s. str.) <i>signatifrons</i> Gahan var.]	31	153	87
<i>anticepunctata</i> Thomson	27	133 & 133'	83
<i>apicalis</i> Aurivillius	36	179	92
<i>auripennis</i> Newman	3	16	59
<i>australis</i> (Castelnau et Gory)	5	25	61
<i>babakensis</i> Gilmour et Breuning	34	169 & 169'	90
<i>bacillima</i> Pascoe	9	48	65
<i>bedoei</i> Pic	26	127	82
<i>biguttatus</i> Donovan	2	11	58
<i>bimaculicollis</i> Thomson	28	134	84
<i>binotata</i> Gahan	9	50	65
<i>binotatus</i> Pascoe	17	91 & 91'	73
<i>bipartita</i> perversa Gahan	35	176	91
<i>bipartius</i> Rits.	14	76	70
<i>bipunctatus</i> Gahan	20	104	76
<i>bituberosa</i> Breuning	6	30	62
<i>blandina</i> Pascoe	28	135	84
<i>bolteata</i> Pascoe	7	34	63
<i>buqueti</i> Guérin	1	6	57
<i>buruensis</i> Gilmour et Breuning	8	41	64
<i>capito</i> Pascoe	13	66	69
<i>cardinalis</i> Thomson	4	22	60
<i>cariosa</i> (Pascoe)	18	97	74
<i>cervicollis</i> Pascoe	8	42	64
<i>cincta</i> Gahan	35	171	91
<i>colloroides</i> Breuning [ <i>Glenea</i> (s. str.) <i>manto</i> Pascoe var.]	29	144	85
<i>commoda</i> Pascoe ( <i>Oberea sobrina</i> Pascoe var.)	33	165	89
<i>confusa</i> Pascoe	14	74	70
<i>confusa</i> Thomson	23	116	79

	Plate	Figs	Page
<i>conspersus</i> Thomson	18	94	74
<i>costata</i> (Lansberge)	1	4	57
<i>cretacea</i> Hope	8	44	64
<i>curialis</i> Pascoe	32	159	88
<i>curta</i> Breuning	6	31	62
<i>daleni</i> Guérin	18	95	74
<i>decempunctatus</i> Westwood	4	21	60
<i>dejeani</i> Breuning	28	136	84
<i>delia</i> Thomson [ <i>Glenea</i> ( <i>Macroglenea</i> ) <i>elegans</i> Olivier var.]	29	140	85
<i>denominata</i> Plavilstschikov	32	160	88
<i>densepuncticollis</i> Gilmour et Breuning	32	158	88
<i>despecta</i> Breuning	28	137	84
<i>dimidiata</i> Gory	35	172	91
<i>discomediopunctata</i> Breuning [ <i>Glenea</i> (s. str.) <i>doriae</i> Breuning var.]	28	138	84
<i>doriae</i> Breuning	28	138	84
<i>drescheri</i> Fisher	4	20	60
<i>elegans</i> Olivier	29	140	85
<i>extensa</i> Pascoe	28	139	84
<i>festiva</i> Thomson	2	8	58
<i>flavoapicalis</i> Gilmour et Breuning	13	70	69
<i>formosana</i> spinipennis Breuning	32	161	88
<i>franciscanus</i> Thomson	15	82	71
<i>fricator producta</i> Schwarzer	34	167	90
<i>funerula</i> Thomson	29	141	85
<i>fuscoampliata</i> Breuning ( <i>Parastathes apicalis</i> Aurivillius var.)	36	179	92
<i>fuscotibialis</i> Breuning [ <i>Glenea</i> (s. str.) <i>quinquevittata</i> Aurivillius var.]	30	151	86
<i>glaucinus</i> Boisd.	5	26	61
<i>glaucus</i> Pascoe	16	83	72
<i>globosa</i> Olivier	2	9	58
<i>grammicus</i> Pascoe	25	120	81
<i>griceipennis</i> Gilmour et Breuning	12	65	68
<i>grisea</i> Thomson	29	142	85
<i>griseatus</i> Pascoe	6	27	62
<i>grisescens</i> Aurivillius	24	117	80
<i>hector</i> Thomson ( <i>Batocera tigris</i> var.)	21	105	77
<i>heptagona</i> Thomson	29	143	85
<i>hirticornis</i> (Fabricius)	13	68	69
<i>honesta</i> Pascoe	10	56	66
<i>hygia</i> Thomson [ <i>Glenea</i> (s. str.) <i>spinifera</i> Voet var.]	26	126	82
<i>ignorantina</i> Thomson	35	173	91
<i>illiata</i> Pascoe	7	35	63
<i>illicebrosa</i> Pascoe	14	73	70
<i>incana</i> Pascoe	10	51	66
<i>inculta</i> Pascoe	6	32	62
<i>induta</i> (Newman)	3	12 & 12'	59
<i>integra</i> Kolbe	3	14	59
<i>irrorata</i> (Fabricius)	15	80	71
<i>japonica unicolor</i> Pascoe	35	174	91
<i>javaensis</i> Gilmour et Breuning ( <i>Eustathes</i> )	36	178 & 178'	92
<i>javaensis</i> Gilmour et Breuning [ <i>Glenea</i> (s. str.) <i>bedoei</i> Pic var.]	26	127	82
<i>javaensis</i> Gilmour et Breuning [ <i>Astathes</i> ( <i>Tetraophthalmus</i> )]	34	170 & 170'	90
<i>javana</i> Pic [ <i>Glenea</i> (s. str.) <i>funerula</i> Thomson var.]	29	141	85
<i>javaensis</i> Breuning	11	57	67



	Plate	Figs	Page
<i>javanica</i> Schwarzer	22	109	78
<i>javanicus</i> Breuning ( <i>Grammoechus</i> )	15	77	71
<i>javanicus</i> Breuning ( <i>Cleptomtopus</i> )	12	63	68
<i>javanicus</i> Fisher	3	13	59
<i>javanum</i> Lansberge	1	5	57
<i>javanus</i> Breuning	19	101	75
<i>javicola</i> Breuning [ <i>Glenea</i> (s. str.) <i>saperdoides</i> Thomson var.]	31	154	87
<i>kulzeri</i> Breuning	20	102	76
<i>laterinigracollis</i> Breuning [ <i>Glenea</i> (s. str.) <i>plagicollis</i> Aurivillius var.]	30	149	86
<i>lichenea</i> Pascoe	7	36	63
<i>lineatipennis</i> Breuning	10	52	66
<i>linnei</i> Thomson	8	40	64
<i>longicollis</i> Pic	9	45	65
<i>longicorne</i> Westwood	2	10	58
<i>lotor</i> Pascoe	16	84	72
<i>luhuanus aequifasciatus</i> Breuning et de Jong	19	100	75
<i>lundii</i> (Fabricius)	5	23	61
<i>lusciosa</i> Pascoe ( <i>Oberea rubetra</i> Pascoe var.)	33	164	89
<i>luscus</i> Fabricius	17	89	73
<i>maculatrix</i> Perty	16	87	72
<i>maculosa</i> Aurivillius	8	43	64
<i>manto</i> Pascoe	29	144	85
<i>marginalis</i> (Fabricius)	1	3	57
<i>mathematica</i> Thomson	29	145	85
<i>medembachi</i> Rits.	18	96	74
<i>mediovittata</i> Pic [ <i>Glenea</i> (s. str.) <i>algebraica</i> Thomson var.]	27	132	83
<i>melanura</i> (Pascoe)	13	69	69
<i>montanus</i> Pascoe	12	62	68
<i>moorei</i> Pascoe	26	125	82
<i>mortalis</i> Thomson	17	92	73
<i>nigrifrons</i> Aurivillius	30	146	86
<i>nigriventris</i> Bates	33	162	89
<i>novemguttata</i> Guérin	30	147	86
<i>obiensis</i> Breuning	26	124	82
<i>ochraceovittata</i> Thomson	27	129	83
<i>oxyura pallidiventris</i> Breuning	34	168	90
<i>pascoei</i> Aurivillius	30	148	86
<i>peregrinus</i> Pascoe	25	121	81
<i>picticornis</i> Pascoe	6	29	62
<i>pigra</i> (Aurivillius)	6	28	62
<i>pilosus</i> Guérin	3	15	59
<i>plagicollis</i> Aurivillius	30	149	86
<i>plagifera</i> Aurivillius	14	72	70
<i>plumigera</i> Westwood	24	119	80
<i>plumosa</i> Olivier	24	118	80
<i>polygrammus</i> Thomson	15	78	71
<i>pontianakensis</i> Breuning	33	163	89
<i>prolata</i> Pascoe	15	81	71
<i>promissum</i> Pascoe	4	18	60
<i>pulchella</i> Pascoe	30	150	86
<i>pulverea</i> Pascoe	23	112	79
<i>punctipennis</i> White	1	1	57
<i>quadripunctata</i> Breuning	10	53	66

	Plate	Figs	Page
<i>quadripunctata</i> Thomson	2	7	58
<i>quinquevittata</i> Aurivillius	30	151	86
<i>regina</i> Thomson	31	152	87
<i>rouyeri</i> Pic	10	54	66
<i>rubetra</i> Pascoe	33	164	89
<i>rubriceps</i> Aurivillius	25	122	81
<i>rufoantennata</i> Gilmour et Breuning	8	39	64
<i>rugosicollis</i> Ritsema	4	19	60
<i>rusticatrix</i> (Fabricius)	19	99	75
<i>saltator tonkinea</i> Pic	9	46	65
<i>saperdoides</i> Pascoe	18	93	74
<i>saperdoides</i> Thomson	31	154	87
<i>scabripennis</i> Pascoe	16	86	72
<i>serricollis</i> Thomson	1	2	57
<i>servilis</i> Pascoe	11	58	67
<i>setulosa</i> Pascoe	7	33	63
<i>sexmaculatus</i> Aurivillius	20	103	76
<i>signatifrons</i> Gahan	31	153	87
<i>sobrina</i> Pascoe	33	165	89
<i>spinifera</i> Voet	26	126	82
<i>spinosus</i> Pascoe	17	90	73
<i>sticticollis</i> Thomson	23	114	79
<i>strandii</i> Breuning	11	59	67
<i>strenuus</i> Thomson	15	79	71
<i>striatopunctatus</i> Breuning	12	64	68
<i>strigata</i> Thomson	31	155	87
<i>strigosa</i> Pascoe	33	166	89
<i>subuniformis</i> Gilmour et Breuning ( <i>Epepeotes luscus</i> Fabricius var.)	17	89	73
<i>sumatrensis</i> Gahan	4	17	60
<i>terminata javanica</i> Aurivillius	35	175	91
<i>ternatensis</i> Breuning	19	98	75
<i>thomsoni</i> Dillon et Dillon	23	113	79
<i>thomsoni bipunctata</i> Breuning	21	106	77
<i>tigrina</i> Thomson	9	47	65
<i>tigris</i>	21	105	77
<i>transversemaculata</i> Breuning	11	60	67
<i>trapezoidalis</i> Breuning	10	55	66
<i>transversicollis</i> Gilmour et Breuning	31	156	87
<i>trimaculata</i> Chevrolat	16	88	72
<i>undulata</i> Pascoe	7	37	63
<i>varicornis</i> (Fabricius)	25	123 & 123'	81
<i>variegata</i> Fisher	14	75	70
<i>velata</i> Thomson	36	177	92
<i>venosa</i> Pascoe	11	61	67
<i>venusta</i> Guérin	31	157	87
<i>victoriana</i> Thomson	21	107	77
<i>viridicincta</i> Boisd. [ <i>Glenea</i> (s. str.) <i>venusta</i> Guérin var.]	31	157	87
<i>vittata</i> Aurivillius	13	67	69
<i>vittatus</i> (Fisher) ( <i>Grammoechus bipartius</i> Rits. m.)	14	76	70
<i>wallacei</i> Pascoe	16	85	72
<i>zonaria</i> (Linnaeus)	23	115	79